

# Turnrollers

## Roller Block series ZT up to 100 t



ZT-20

### Self-centering

The ZT series has two synchronously operating drive unit motors which arrange a continuous rotation with any adjustable speed. The 4 roller joints align themselves via the diameter of the workpiece.

### Scope of delivery:

1 Control unit (integrated)

### Features

- For turning and positioning workpieces in the sections of mechanical engineering, container building, plant construction and pipeline construction.
- Welded, robust steel construction.
- Adjustable rotating speed.
- Unit equipped with 4 rollers each.
- Self-aligning roller joints via workpiece diameter.

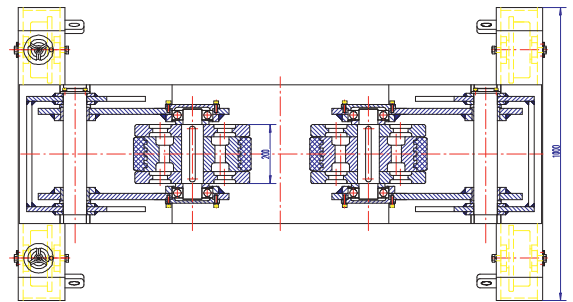
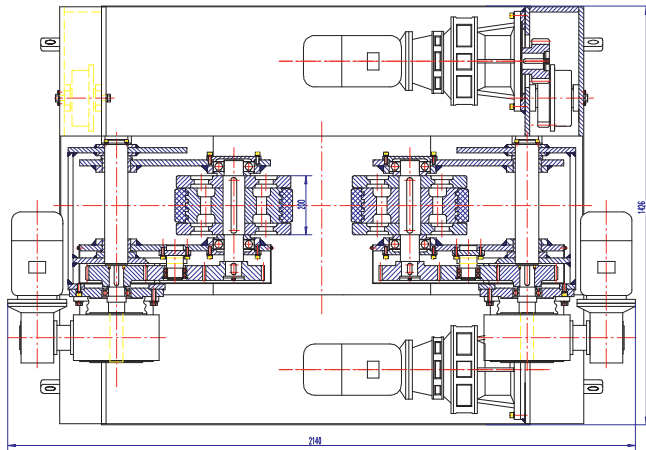
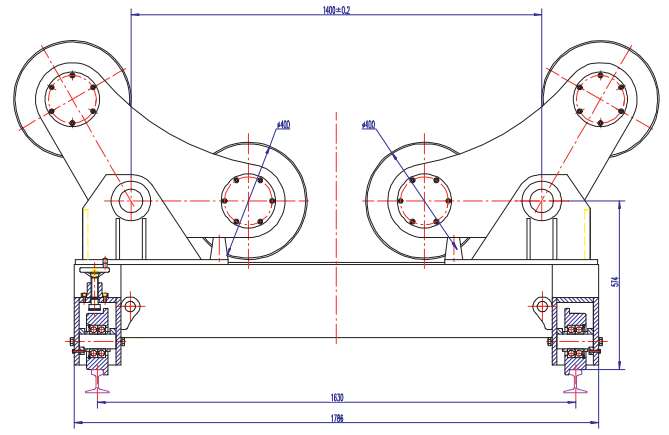
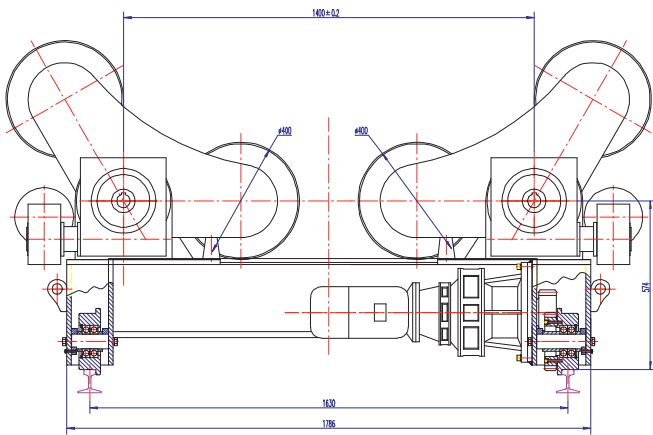
## Notiz

More about UP-welding technology you will find in our catalog on Page 1.80



# Turnrollers

## Roller Block series ZT up to 100t



ZT-40

Model	ZT 5	ZT 10	ZT 20	ZT 30	ZT 40
Max. Load	5.000 kg	10.000 kg	20.000 kg	30.000 kg	40.000 kg
Workpiece diameter	250 – 2300 mm	320 – 2800 mm	500 – 3500 mm	600 – 4200 mm	600 – 4200 mm
Speed	100 – 1000 mm/min	100 – 1000 mm/min	100 – 1000 mm/min	100 – 1000 mm/min	100 – 1000 mm/min
Motor capacity	2 x 0,37	2 x 0,55	2 x 0,75	2 x 1,1	2 x 1,5
Rubber rolls Ø x width	250 x 100	300 x 120	350 x 120	400 x 120	400 x 120
Steel rolls Ø x width	2 x 240 x 20	2 x 290 x 25	2 x 340 x 30	2 x 390 x 40	2 x 390 x 40

Model	ZT 50	ZT 60	ZT 80	ZT 100
Max. Load	50.000 kg	60.000 kg	80.000 kg	100.000 kg
Workpiece diameter	750 – 4800 mm	750 – 4800 mm	850 – 5000 mm	1000 – 5500 mm
Speed	100 – 1000 mm/min	100 – 1000 mm/min	100 – 1000 mm/min	100 – 1000 mm/min
Motor capacity	2 x 1,5	2 x 2,2	2 x 2,2	2 x 3
Rubber rolls Ø x width	450 x 120	450 x 120	500 x 120	500 x 120
Steel rolls Ø x width	2 x 444 x 50	2 x 444 x 50	2 x 490 x 60	2 x 494 x 70